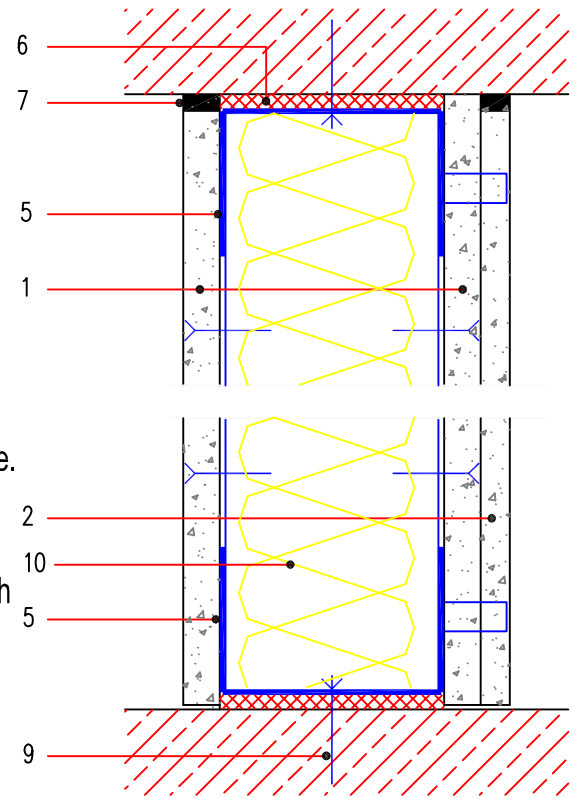


# XPR W2

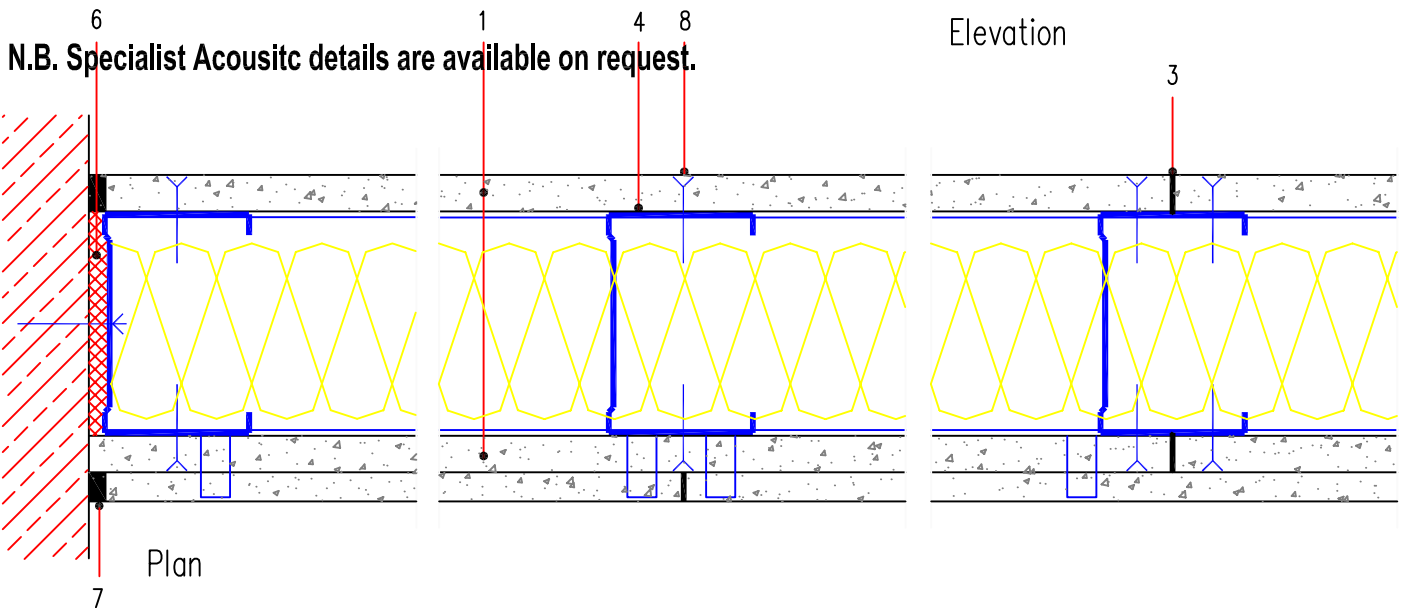
(F60, 56dB)



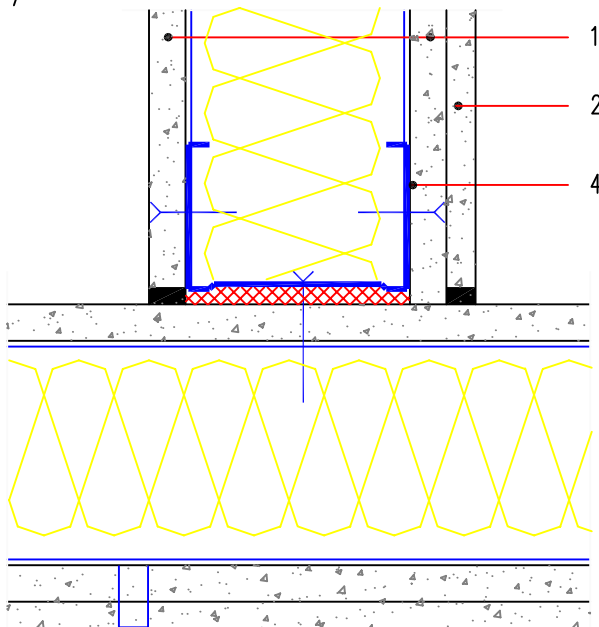
1. FERMACELL Gypsum Fibreboard - 12.5mm.
2. FERMACELL Gypsum Fibreboard - 10mm.
3. FERMACELL Jointstick adhesive.
4. PROTEKTOR C-Profile, 75mm width, 0.6mm gauge, 50mm fixing face.
5. PROTEKTOR U-Profile Header & Footer Track - 0.6mm gauge.
6. Acoustic Isolation Strip
7. Flexible Filler (intumescent as required) or FERMACELL Jointfiller with separation tape.
8. FERMACELL Screws 3.9 x 30mm.
9. Frame Anchor.
10. 60mm ROCKWOOL Flexi.



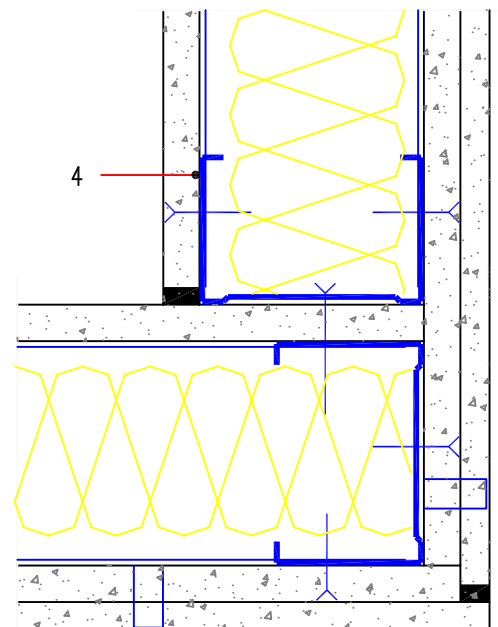
Elevation



Plan



T - Junction



External Corner Junction

**N.B. Specialist Acoustic details are available on request.**