

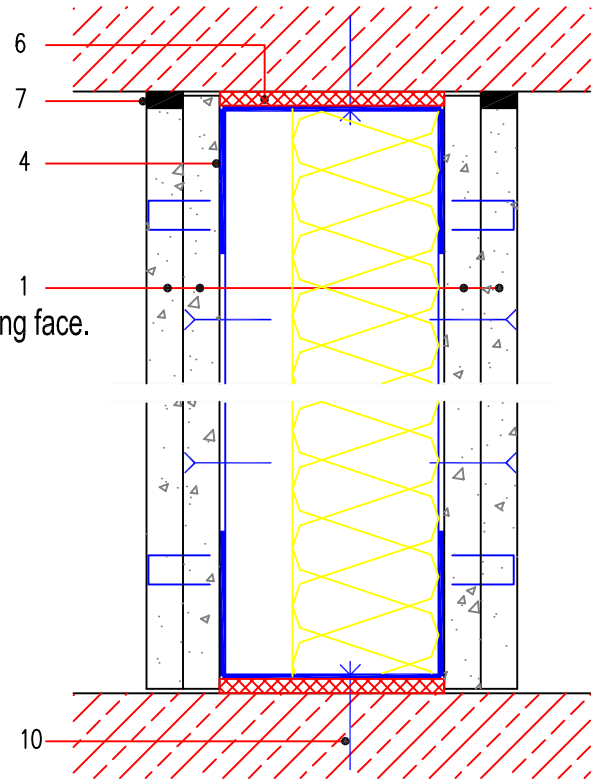
XPR W3



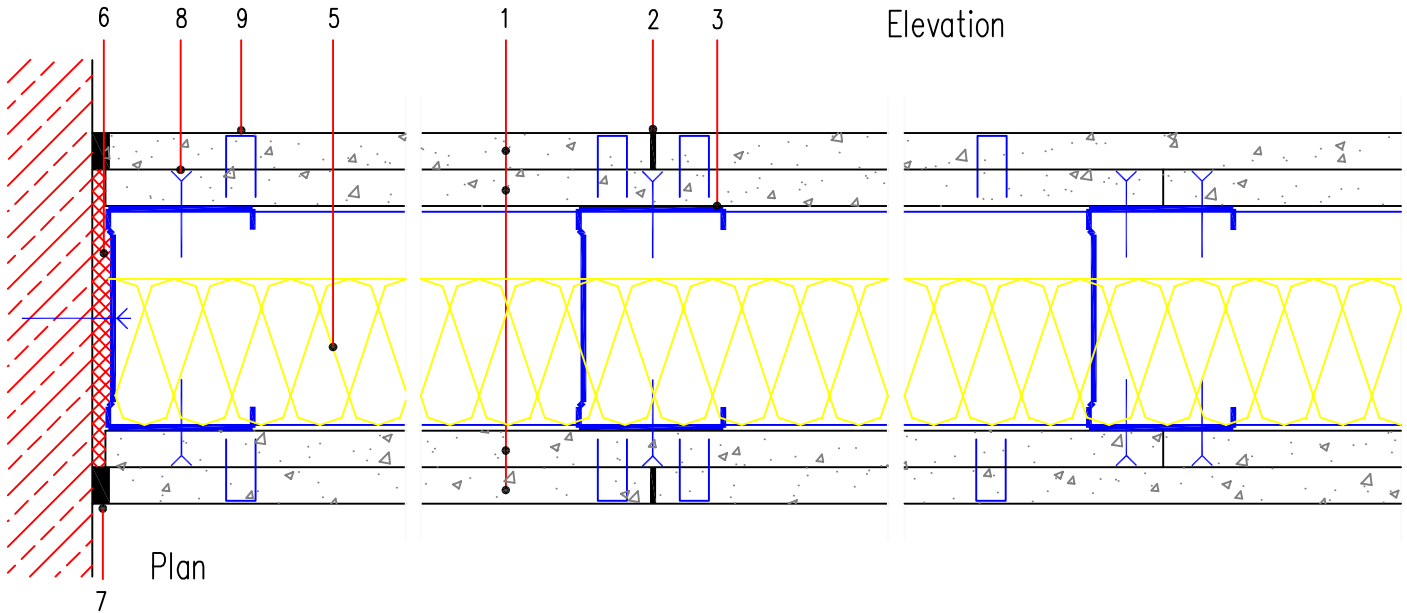
(F90, 62dB)

1. FERMACELL Gypsum Fibreboard - 2 x 12.5mm or 12.5mm + 10mm - outer layer fixed back to the stud where required.
2. FERMACELL Jointstick adhesive.
3. PROTEKTOR C-Profile, 75/100mm wide, 0.6mm gauge, 50mm fixing face.
4. PROTEKTOR U-Profile Header & Footer Track - 0.6mm gauge.
5. 60mm ROCKWOOL Flexi.
6. Acoustic Isolation Strip.
7. Flexible Filler (intumescent as required) or FERMACELL Jointfiller with separation tape.
8. FERMACELL Screws 3.9 x 30mm.
9. Staple or Screws Fermacell 3.9 x 30mm.
10. Frame Anchor.

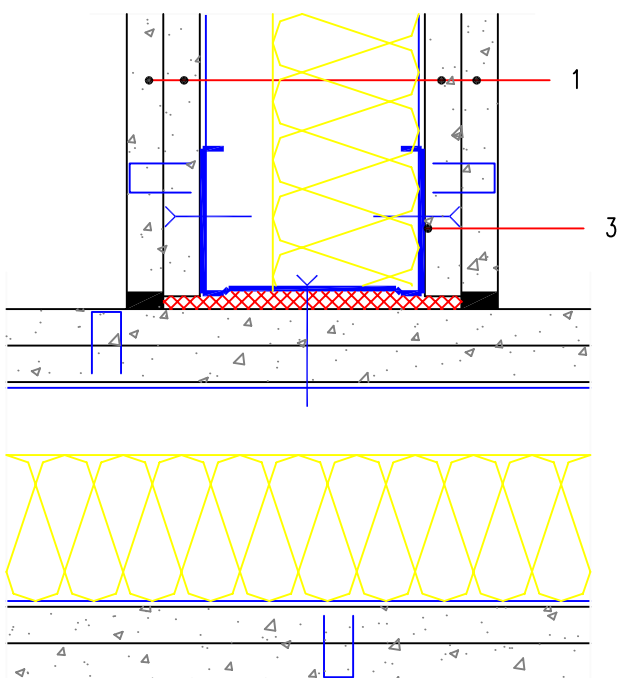
N.B. Specialist Acoustic details available on request.



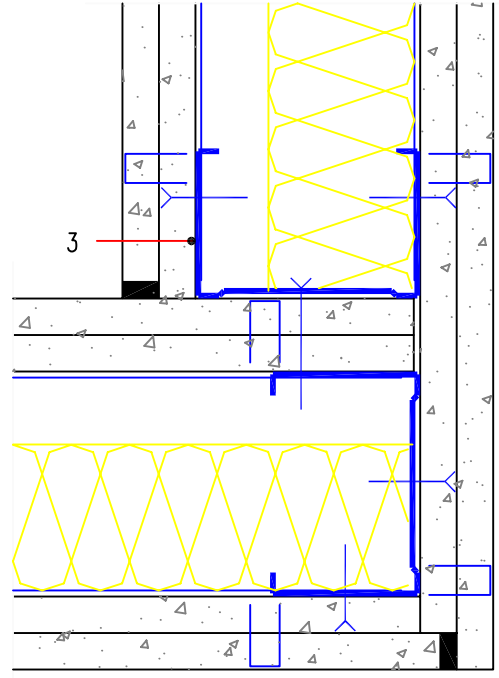
Elevation



Plan



T - Junction



Corner Junction