

DATA SHEET

END WALL MOVEMENT JOINTS

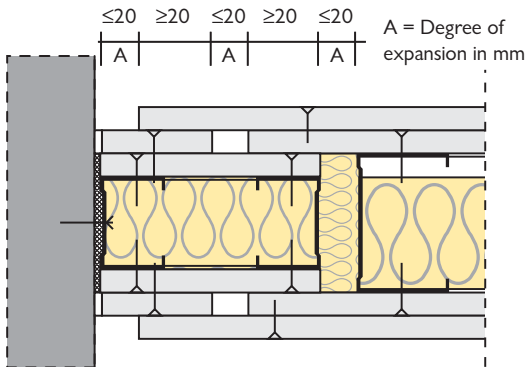
Exterior facades, principally curtain walls, can be subject through wind loads, to pressure and suction movements, and therefore must receive special attention in regard to the design, construction and assembly.

Various constructions are shown in the illustrations shown overleaf.

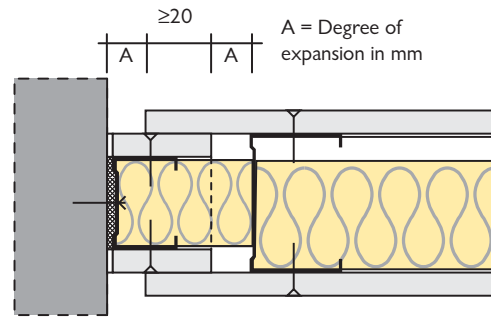
With these junctions care must also be taken that no structural forces from the building shell affect the FERMACELL boards. Care should be taken to ensure the sound-reduction and fire resistance requirements are met.

For further technical advice please call 0870 803 0977.

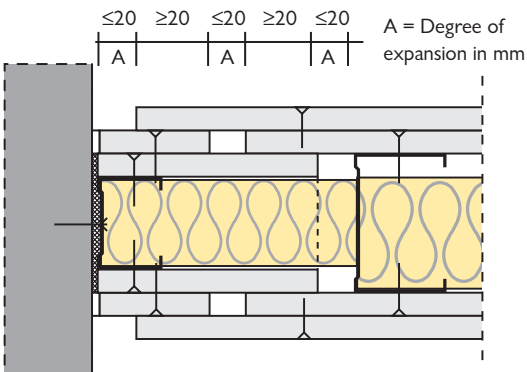
DATA SHEET



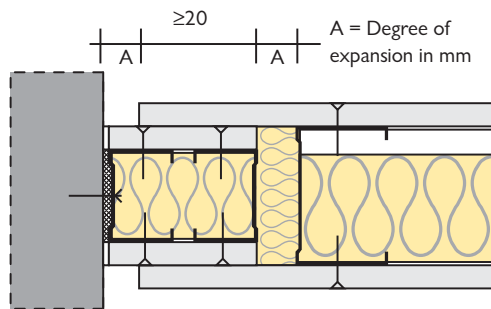
FERMACELL partition, double-layer boarding, F90-A.
Movement joint detail and/or facade junction with two PROTEKTOR steel studs and strips of board.



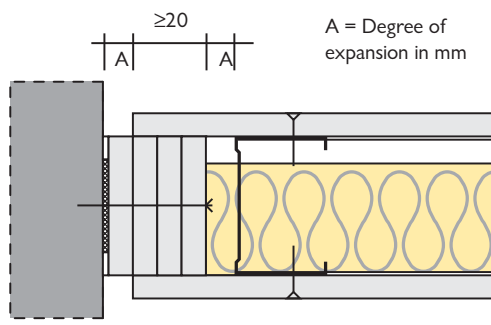
FERMACELL partition, single-layer boarding, F30-A/F60-A.
Wall movement joint and/or facade junction with a PROTEKTOR steel stud and strips of board.



FERMACELL partition, double-layer boarding, F90-A.
Wall movement joint and/or facade junction with a PROTEKTOR steel stud and strips of board.



FERMACELL partition, single-layer boarding, F30-A/F60-A.
Wall movement joint and/or facade junction with two PROTEKTOR steel studs and strips of board.



FERMACELL partition, single-layer boarding, F30-A/F60-A.
Wall movement joint and/or facade junction using strips of FERMACELL.

The dimension details shown alongside these details apply to structures with fire resistance requirements according to DIN 4102 Part 4.