

## DATA SHEET

# XPR SECURITY PARTITION

The XPR Security Partition is a robust, lightweight, non load-bearing security wall offering high resistance to determined attack. It is used in commercial and industrial applications such as partition walls in banks, prisons, defence establishments, shops and data storage areas.

The wall comprises of a sheet of PROTEKTOR SEC2 Security Lath, fixed to PROTEKTOR DIN Stud, secured at the foot and head into PROTEKTOR Deep Flange Track. It is lined both sides with 2 layers of FERMACELL 12.5mm Gypsum Fibre Board.

The FERMACELL boards should only be jointed using the FERMACELL Jointing System. Both layers of board should be glue jointed using the FERMACELL Jointstik adhesive.

The finish treatment is achieved by application of FERMACELL Fine Surface treatment.

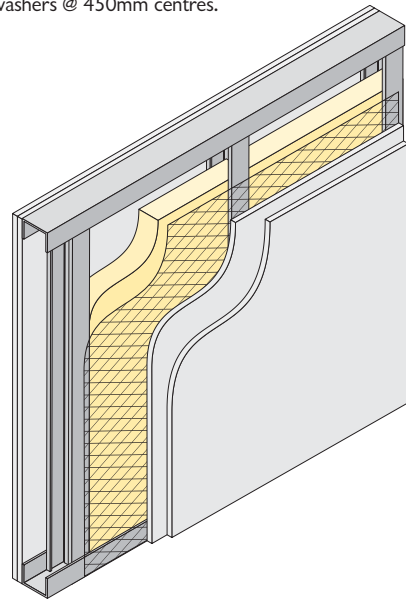
A wet skim plaster finish can be applied, but reference to the XPR technical team should be made beforehand.

This system is based on the severe rated XPR W3 partition detail. For extra security and wall build heights please refer to the table on the reverse.

For added acoustic and thermal performance 60mm ROCKWOOL FLEXI should be inserted between the studs.

### Fixing to studwork

The lath should be secured to the stud with 6/8 x 30 zinc screws with 25mm x 1.5mm penny washers @ 450mm centres.



## DATA SHEET

### EXTRA SECURITY

Whilst the XPR Security Partition is extremely robust, extra strengthening can be obtained by either fixing the mesh to both sides of the steel studs or by increasing the gauge of the mesh.

#### Mesh Gauge

Low Security	SEC3 – 1.4 Gauge
Normal Security	SEC2 – 1.8 Gauge
High Security	SEC1 – 3.4 Gauge

### MAXIMUM BUILD HEIGHTS

Stud Size	Spacing	Max. Height
75mm	600mm	4.0m
75mm	400mm	4.5m
100mm	600mm	4.5m
100mm	400mm	5.0m