

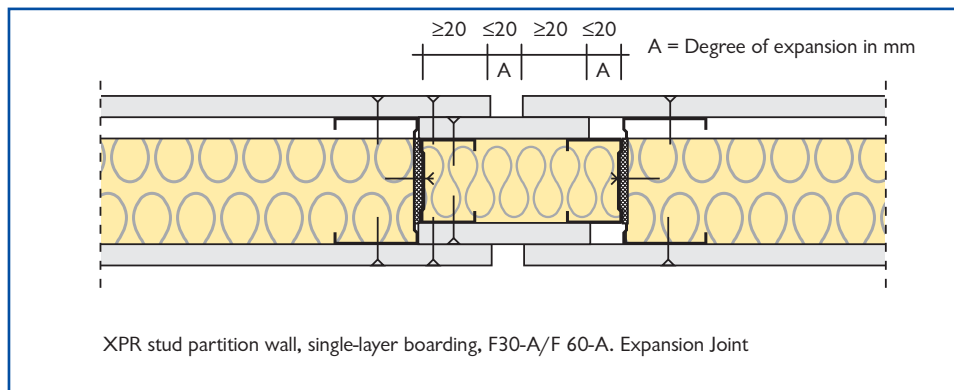
DATA SHEET

STANDARD WALL MOVEMENT JOINTS

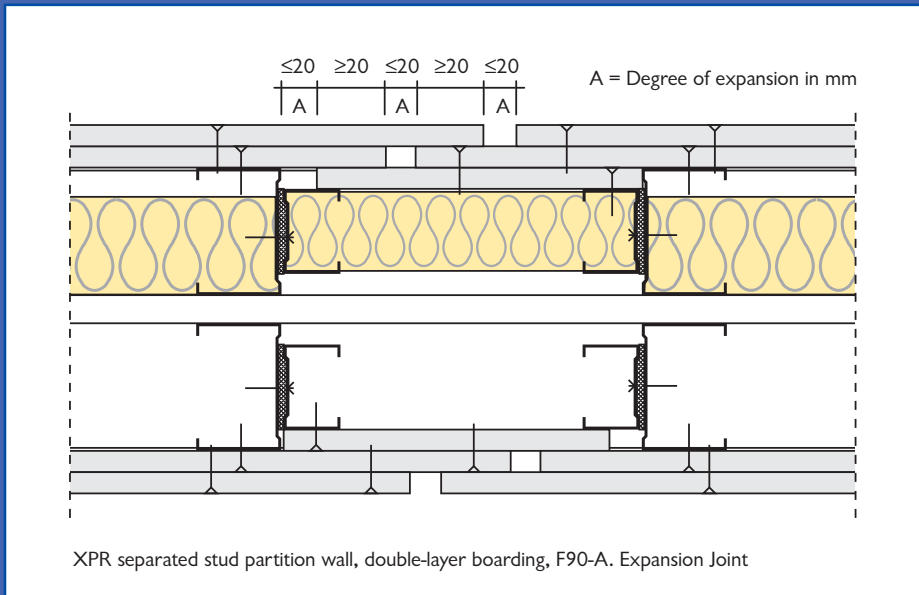
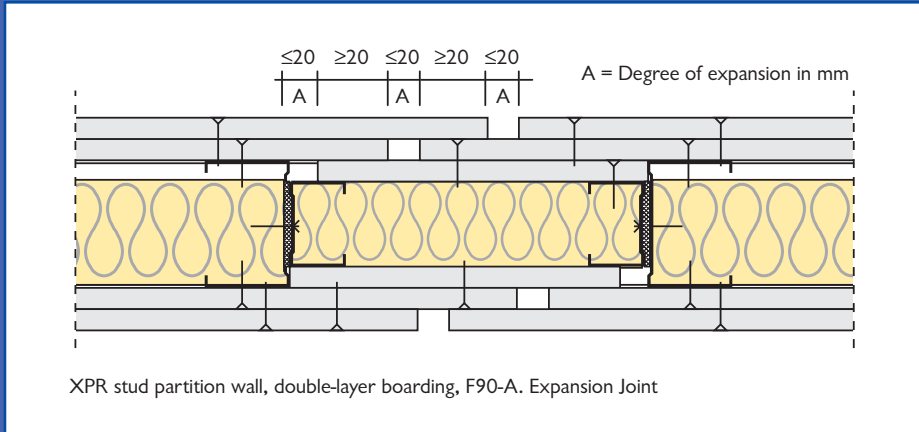
Expansion joints are required in XPR partitions and where there are expansion joints in the shell of the building. As partitions are subject to dimensional movement with changes in the internal climate (elongation and shrinkage), this must also be taken into account with expansion joints. Spacing of expansion joints depends on the jointing method:

- Filler joints require movement joints at a maximum of 8.0m
- Adhesive joints require movement joints at a maximum of 10.0m

Movement joints for single and double layered partitions should be constructed as detailed in the illustrations. Care should be taken, that a consistent separation of the two leaves is maintained within the FERMACELL as well as the sub-structure. Measures to safeguard the required sound reduction and fire prevention characteristics should be taken into account.



DATA SHEET



Where acoustics or fire performance is not critical then these two options below may be used.

