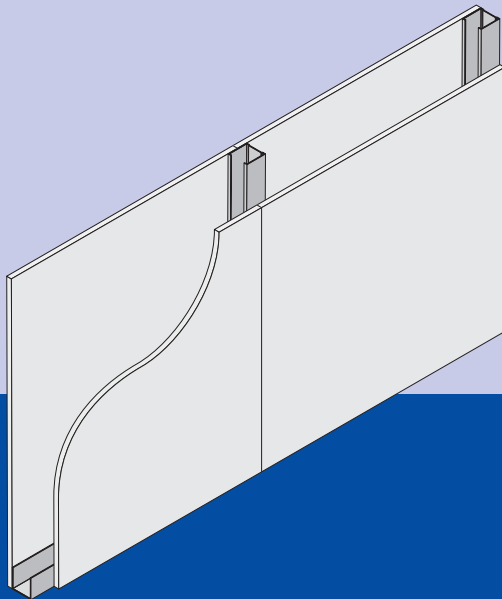


# XPR W1A

## PARTITION (75MM STUD)



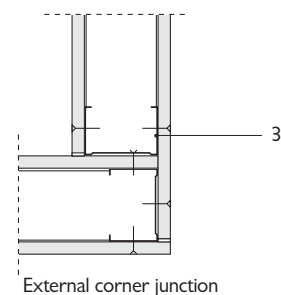
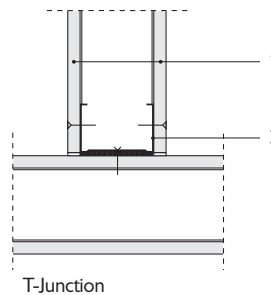
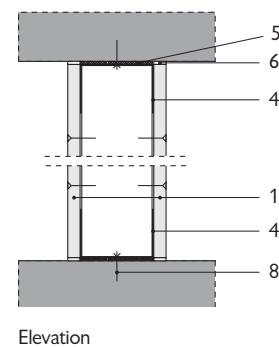
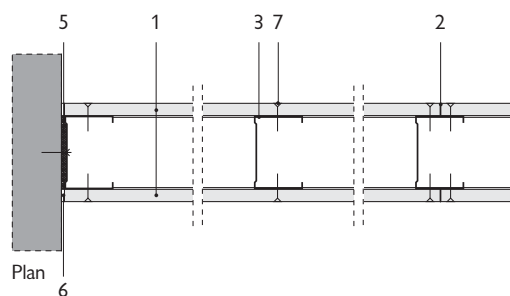
For a simple solution to E2 of the Building Regulations and for areas of lower acoustic requirement.

Fire Protection	30 minutes
Sound Insulation	Rw 43dB
Maximum Height of Wall	4.5 metres
Weight of Wall	approx 32kg/m <sup>2</sup>
Duty Rating	Severe

### System Components

Xella	12.5mm FERMACELL Board
Protektor	75 x 50 x 0.6mm Protektor Metal Studs

### Detail Drawings



- 1 FERMACELL Gypsum Fibre Board – 12.5mm
- 2 FERMACELL Jointstick adhesive
- 3 PROTEKTOR C-Profile, 75mm wide 0.6mm gauge, 50mm fixing face
- 4 PROTEKTOR U-Profile Header & Footer Track to suit – 0.6mm gauge
- 5 Acoustic Isolation Strip
- 6 Flexible Filler (Intumescent as required) or FERMACELL Jointfiller with separation tape
- 7 FERMACELL 3.9 x 30mm Screws
- 8 Wall fixing / frame anchor

Specialist acoustic details available on request.

\*FERMACELL square or tapered edge boards may be used.